

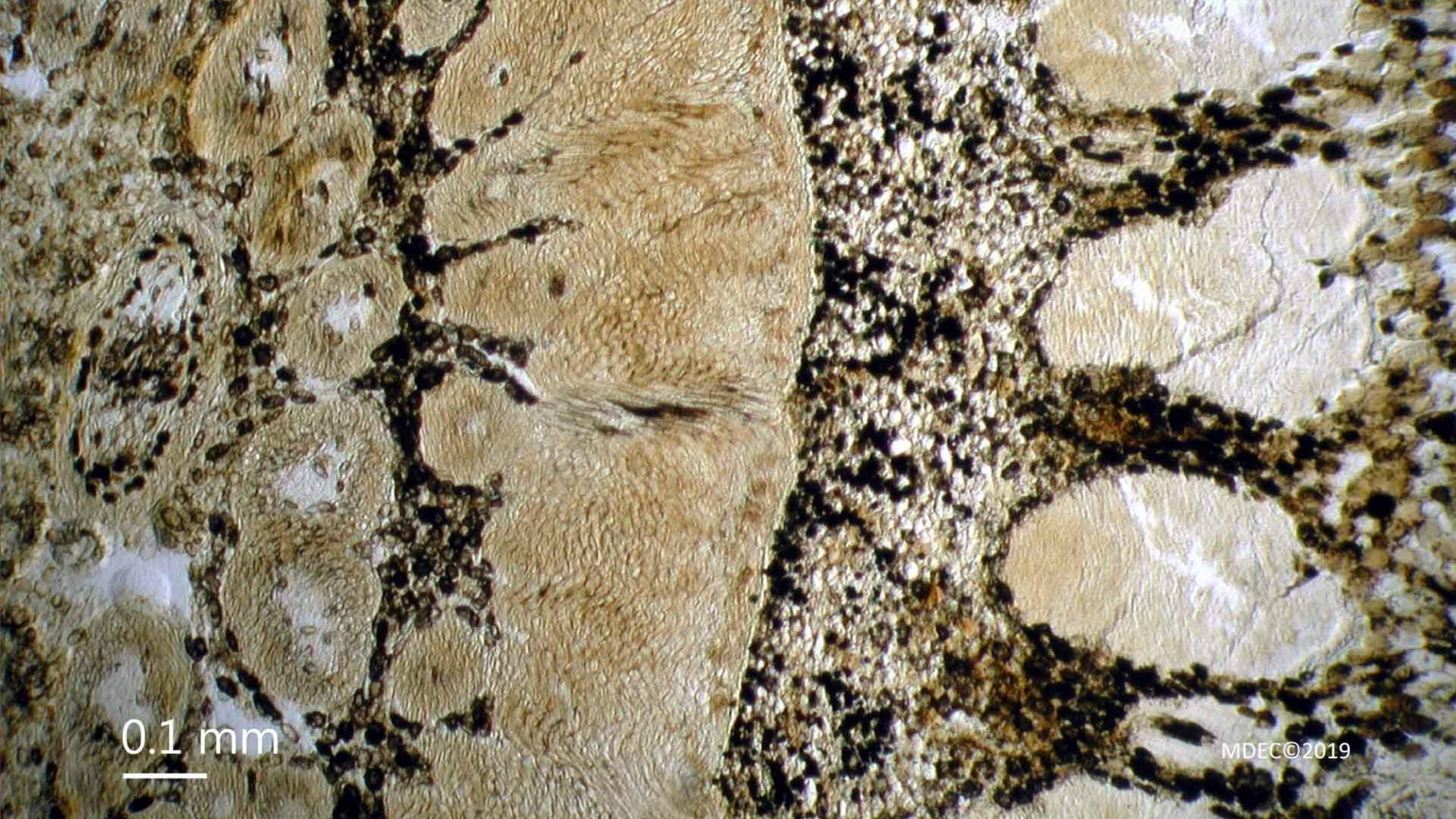




1 mm

This micrograph shows a cross-section of a plant stem. The central pith is a large, circular, light-brown region with a distinct radial pattern of vascular bundles. Surrounding the pith is a thick cortex containing numerous vascular bundles arranged in a ring. Each vascular bundle consists of a central vascular cylinder surrounded by a sclerenchyma sheath. The outermost layer is the epidermis, which is covered by a thin cuticle. A scale bar in the bottom left corner indicates 1 mm.

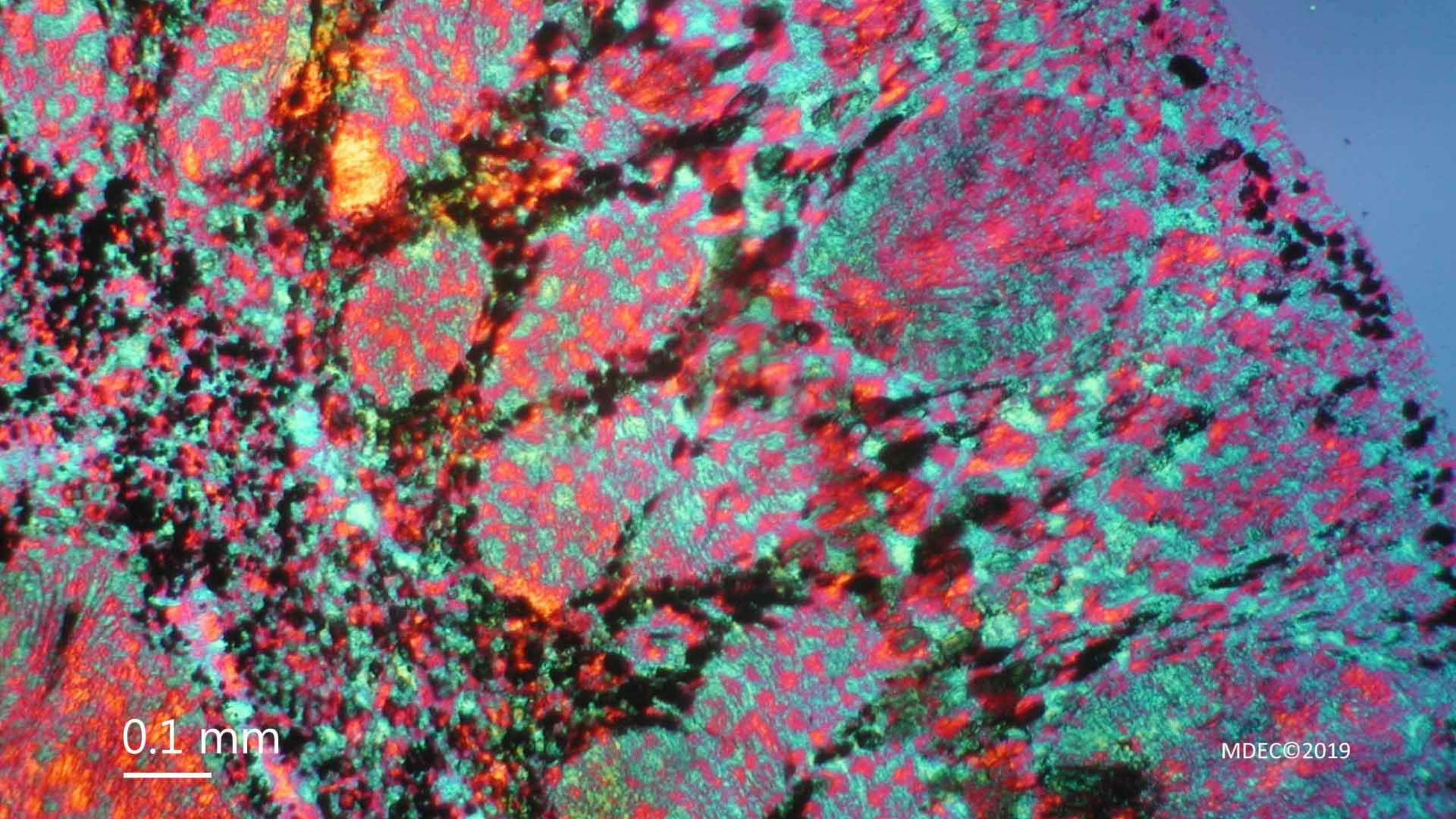
MDEC©2019



0.1 mm



MDEC©2019



0.1 mm

MDEC©2019





VUURSTENEN